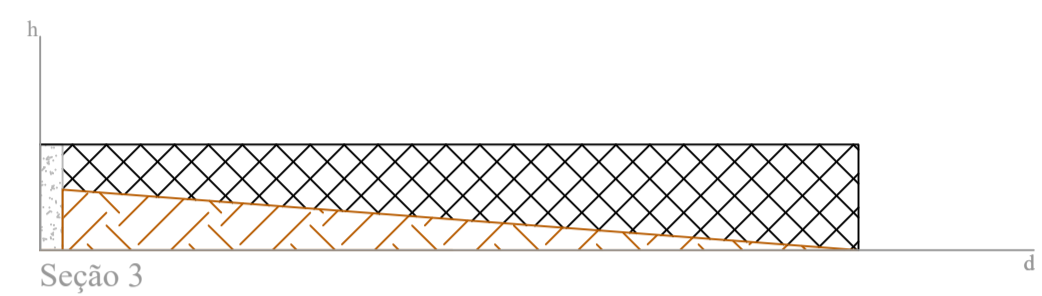
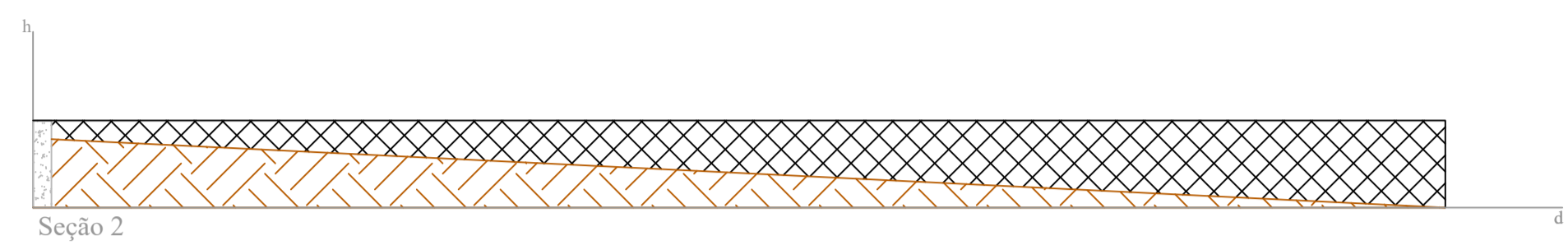
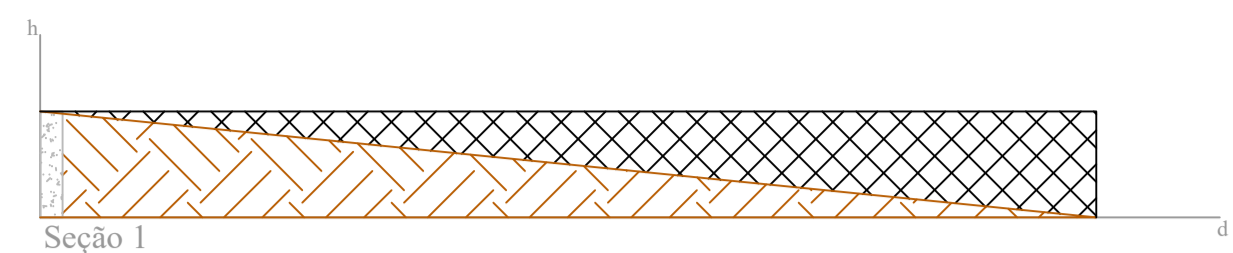


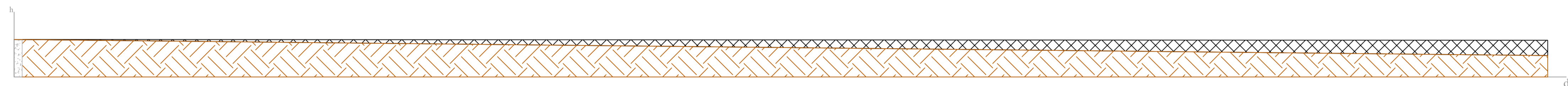
1 PLANTA BAIXA  
ESCALA 1/250



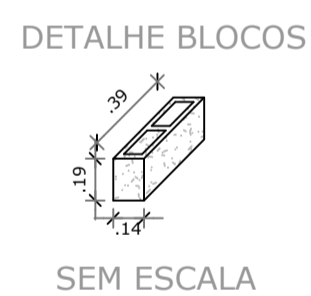
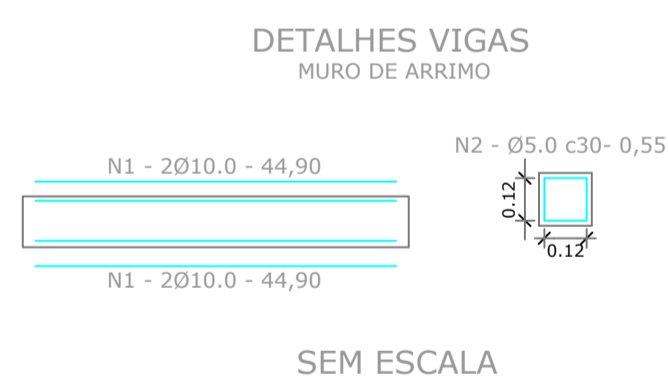
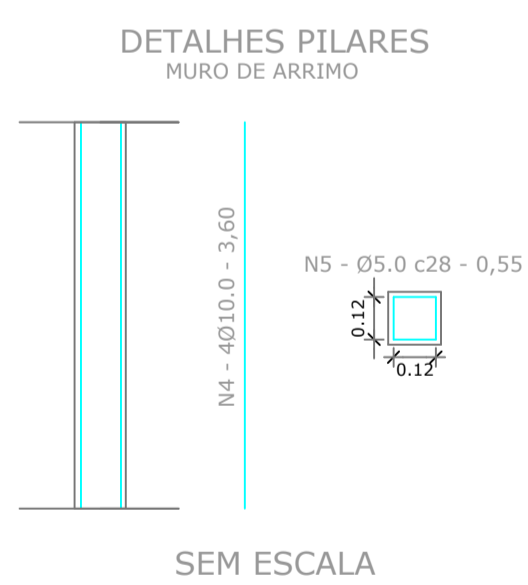
2 SEÇÕES TRANSVERSAIS  
ESCALA 1/100

LEGENDA	
	TERRENO
	ATERRO

ÁREA DE ATERRO = 771,36 m <sup>2</sup>
$A = \{L1 * [(AS1 + AS2) / 2] + L2 * [(AS2 + AS3) / 2]\}$
Sendo: L1 = 29,00 m
L2 = 28,43 m
AS1 = 9,78 m <sup>2</sup>
AS2 = 19,35 m <sup>2</sup>
AS3 = 5,20 m <sup>2</sup>

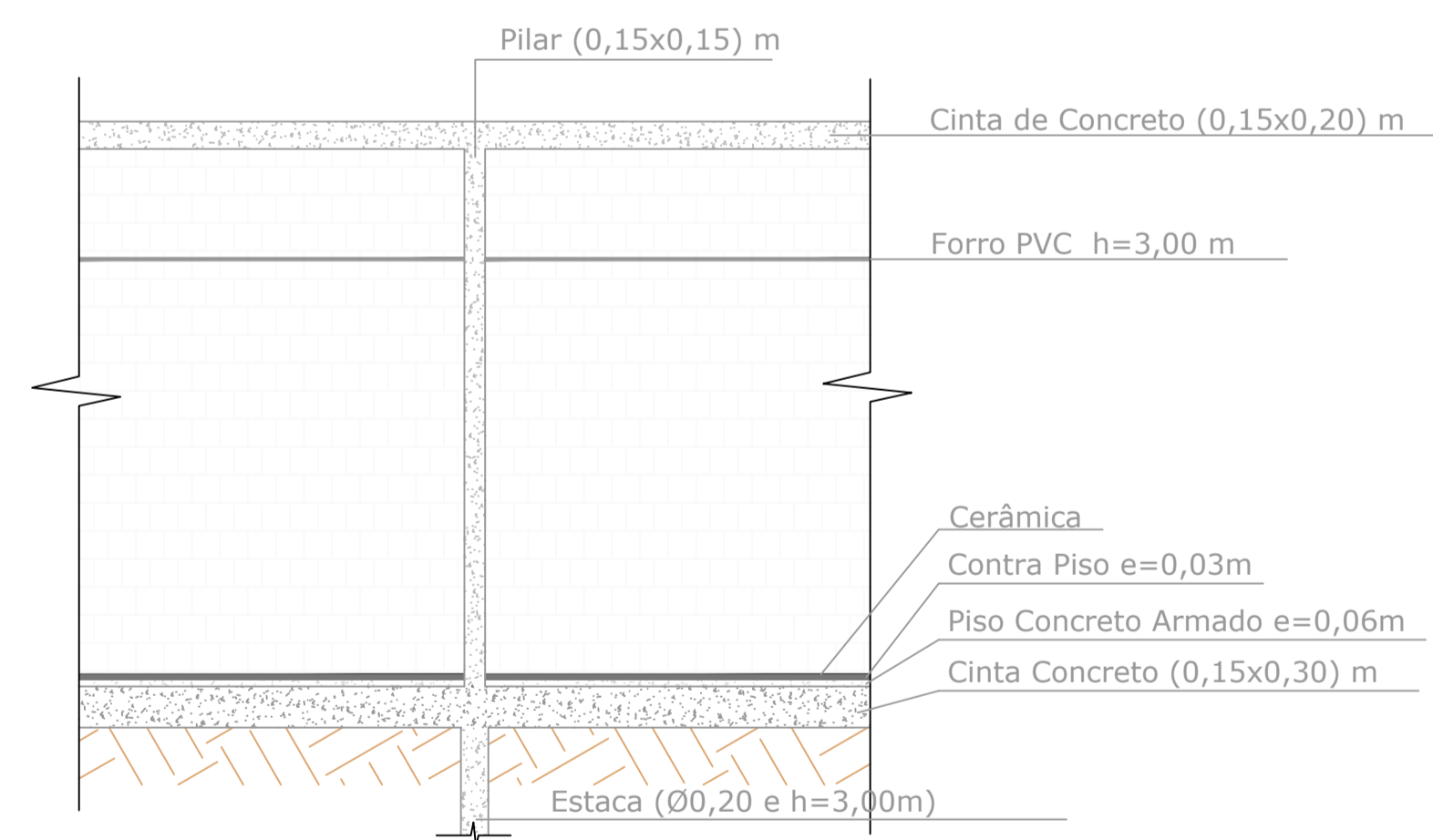


3 PERFIL LONGITUDINAL  
ESCALA 1/100

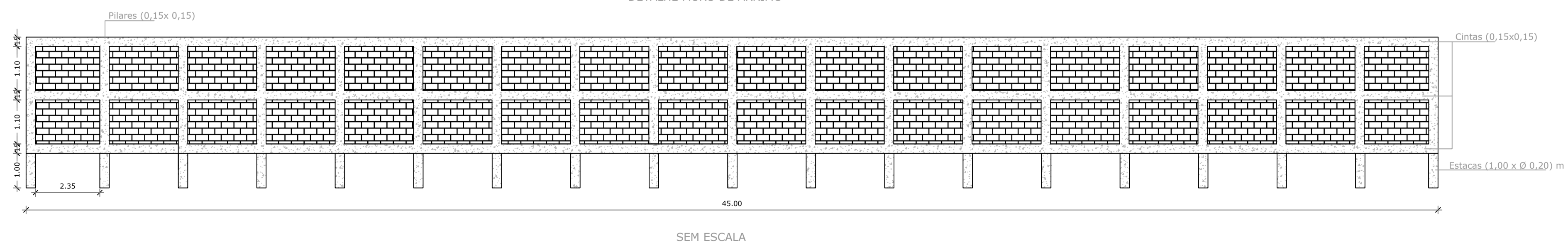


RESUMO DA FERRAGEM			
Ø	COMP.	PESO (KG/m)	PESO TOTAL (KG)
5.0	104,70	0.154	16,13
10.0	893,65	0.617	551,38

DETALHES DE ESTRURAS



ESCALA 1:50



SEM ESCALA

<p><b>ASSOCIAÇÃO DOS MUNICÍPIOS DA MICRO REGIÃO DO VALE DO PARAÍBUNA</b> Av. Rui Barbosa, 642 - Santa Terezinha - Juiz de Fora - MG TEL: (32) 3224-8400 - EMAIL: engenharia@ampar-mg.org.br</p>			
<p>PREFEITURA: <b>PREFEITURA MUNICIPAL DE BELMIRO BRAGA - MG</b></p>			
<p>DESCRIÇÃO: <b>DETALHES CONSTRUÇÃO DE ANEXO ESCOLA MUNICIPAL WOLFF KLABIN</b></p>			
ESCALA: INDICADAS	FRANCHA: 02/02	CONTEUDO: PLANTA BAIXA, PERFILES LONGITUDINAIS, SEÇÕES TRANSVERSAIS, DETALHES MURO DE ARRIMO, DETALHE DAS ESTRUTURAS	RESPONSÁVEL TÉCNICO: PEDRO GIOVANNI VIEIRA VIDAL, CREA-MG: 59.552/D
DATA: AGOSTO/17	DESENHO: MARIANA MATIAS		
ARQUIVO: ARQ ESCOLA KLABIN			